

Looking to  
make your every  
beginning auspicious.

Some make homes, others create homes. The Sankalp has been created with a desire to present you the choicest of living, for a lifestyle you look forward to. The Sankalp is an imagination of Stanch and Imax, a group that focuses on creating homes with due care for customer needs and expectations.

Developed & Promoted by



**IMAX**  
Developers (P) Ltd.

H.NO:7-1-636/2. 1st Floor, Model Colony,  
Erragadda, Hyderabad-500038.  
Ph: 040 23800299 Cell: +91 7093 939 381, 82  
email: sankalp@stanchproperties.com  
[www.stanchproperties.com](http://www.stanchproperties.com)

Toll Free No: 1800 3131 334

Consultants



**AKSHAYA INFRA CONSULTANTS PVT. LTD.**

101 to 104, 1st Floor, Bhavana Enclave,  
Beside Nalanda School, HIG - 451 & 452, VI Phase,  
KPHB Colony, Hyderabad - 500 075  
Tel: 91 40 23154848, 23154949, 23154999

NOTE : This brochure is only a conceptual presentation of the project and not a legal offering.  
The promoters reserve the right to make changes in plans, specifications and elevation, as deemed fit.

Artifice 9885253570

# THE SANKALP

Auspiciously yours

Auspicious  
beginnings, eternal  
happiness.

2 & 3 BHK Luxury Apartments near HITEC City

Developed & Promoted by



**IMAX**  
Developers (P) Ltd.



Your destination,  
not just  
an address.

# THE SANKALP

Auspiciously yours



AERIAL VIEW



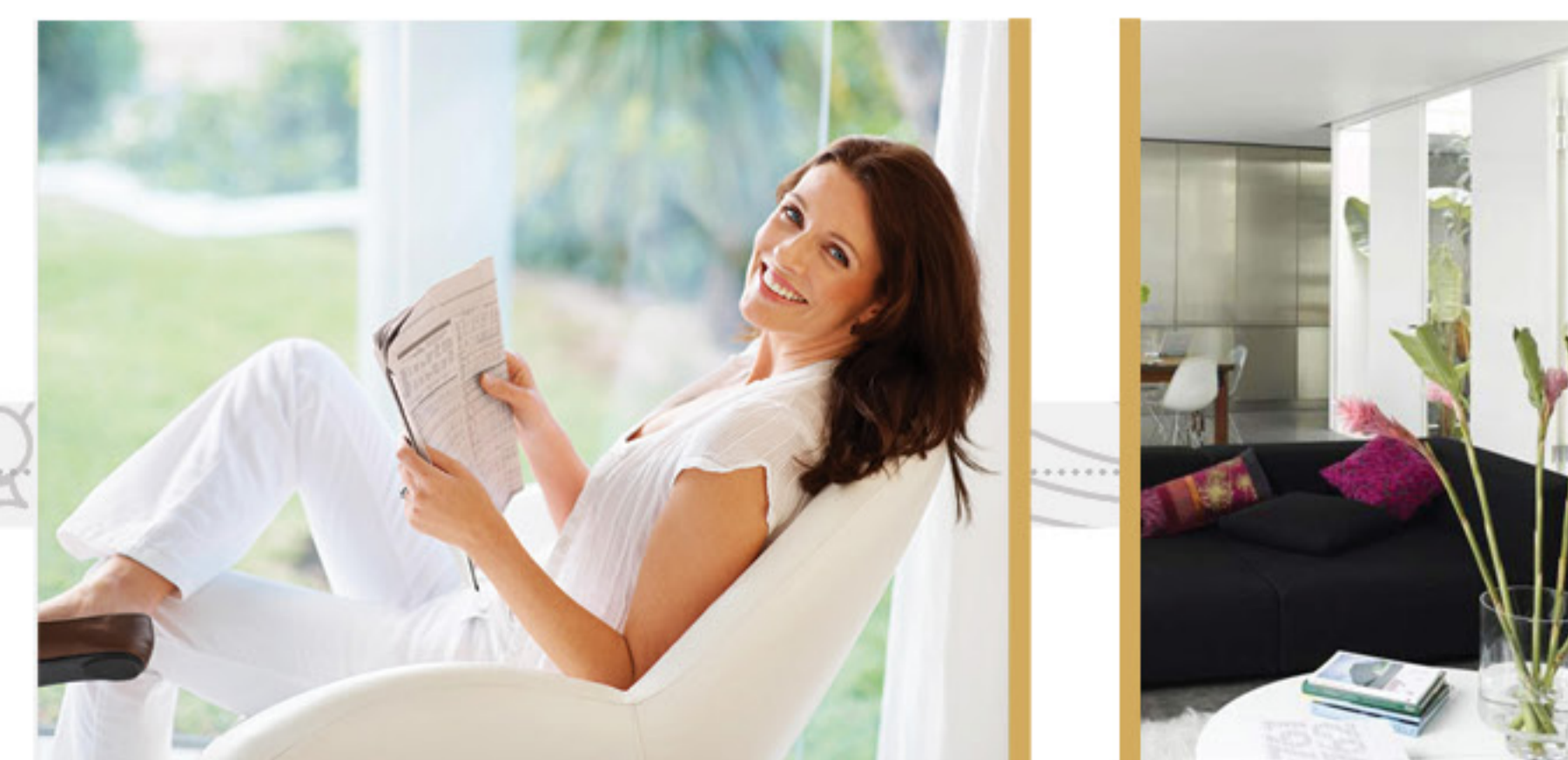


AERIAL VIEW

# THE SANKALP

Auspiciously yours

Savour  
the bliss of  
contentment.



There isn't anything that makes life more complete than happiness does. When joy pervades into our every day, everything that surrounds us feels complete. Even the simplest of moments like admiring the sun in the fresh of dawn, whiling away time on a rainy day in the sit-out, or just chatting away with your loved ones over a light bite – make life nicer, livelier and most of all, contented. We invite you to experience many such moments at **The Sankalp**.



Life is beautiful in good company.

Make your way into **Block A** of The Sankalp, an abode to a collection of 2 BHK and 3 BHK homes that bring a fine balance of privacy and a pleasant neighbourhood. It offers a bouquet of homes that span between 1290 sft and 1925 sft of space. And it is where you'll find your wishes getting fulfilled. Beyond all of that, it's a place where you'll meet people you'd want to share your camaraderie and bond with.

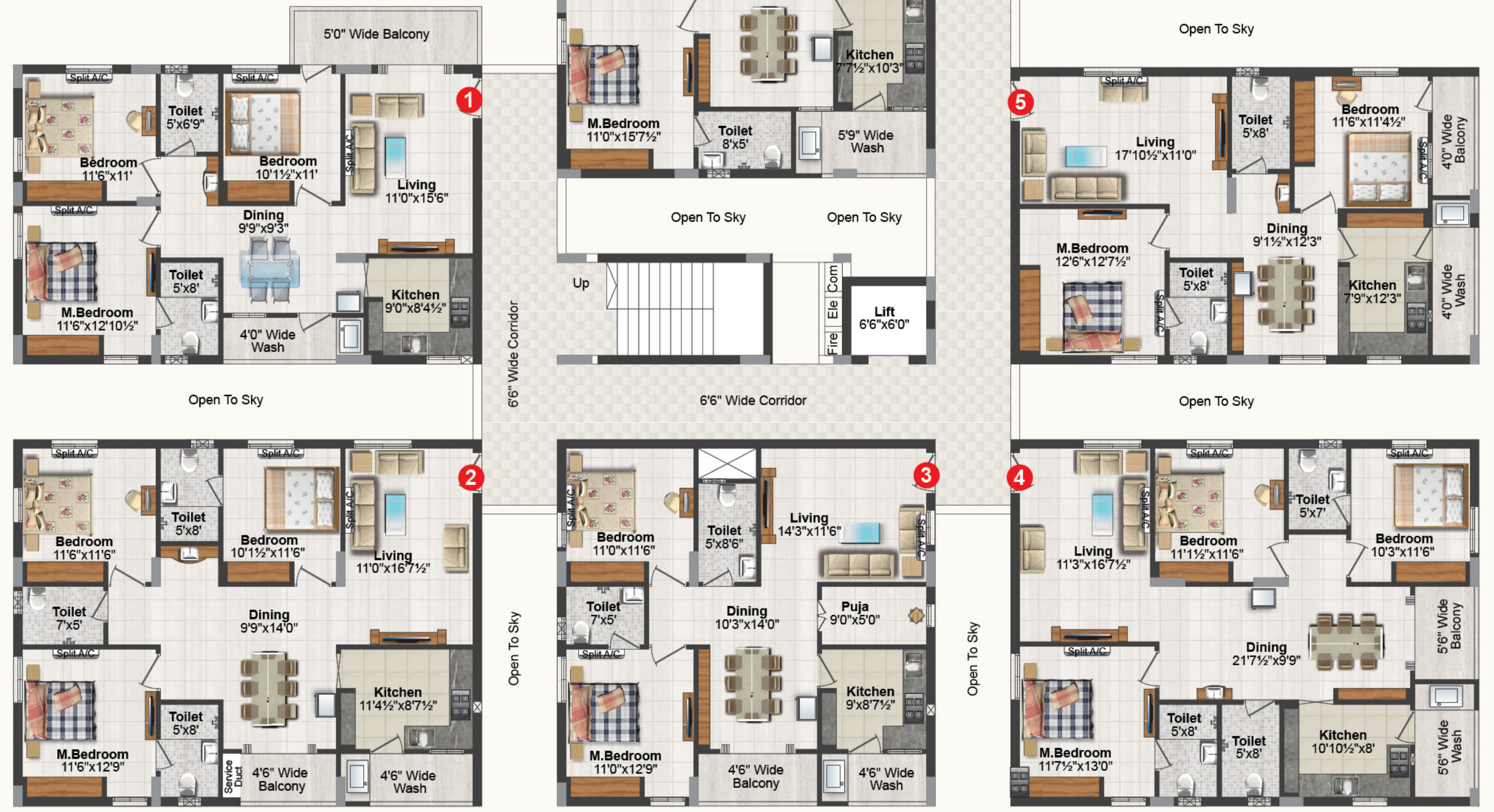
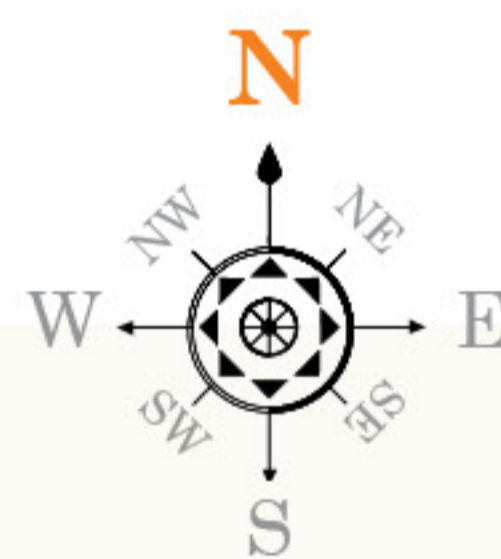
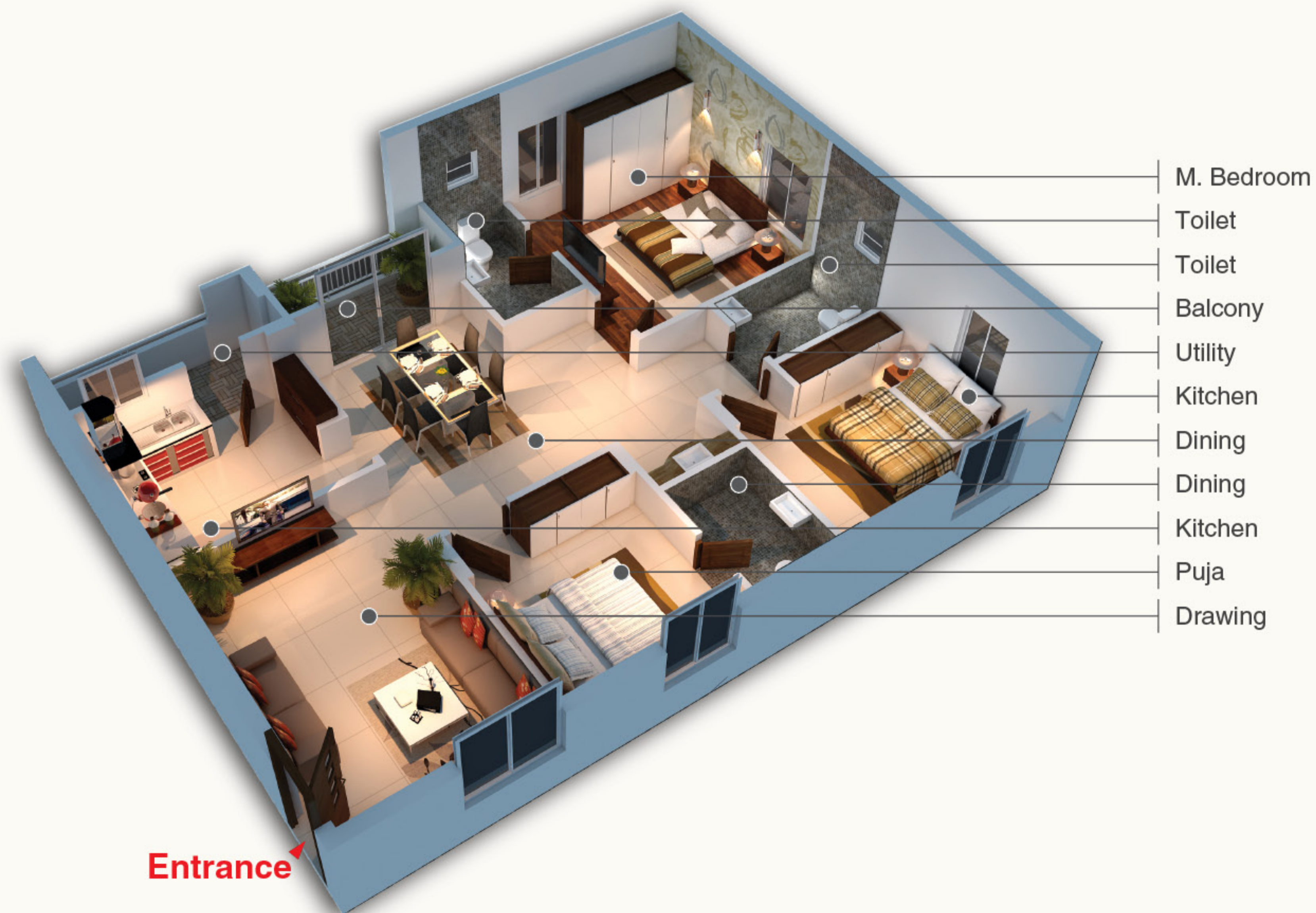
### Block A Typical Floor Plan

AREA STATEMENT

Flat No.	1	2	3	4	5	6	7	8
Unit	3 BHK	3 BHK	2 BHK	3 BHK	2 BHK	2 BHK	3 BHK	3 BHK
Area in Sft.	1410	1598	1290	1598	1293	1293	1724	1925



3 BHK 3D VIEW  
FLAT No. 2





# THE SANKALP

Auspiciously yours

A place that presents a lot to choose from.

Welcome to the **Block B** of The Sankalp, yet another fascinating tower and home to flats in diverse 2 BHK and 3 BHK sizes that span between 1291 sft and 1705 sft. The best part is, it has homes available for both family types - nuclear or joint. This charming residential community will be the place where you'll cherish every moment of your life, whatever is the size you've opted for.

KEY PLAN

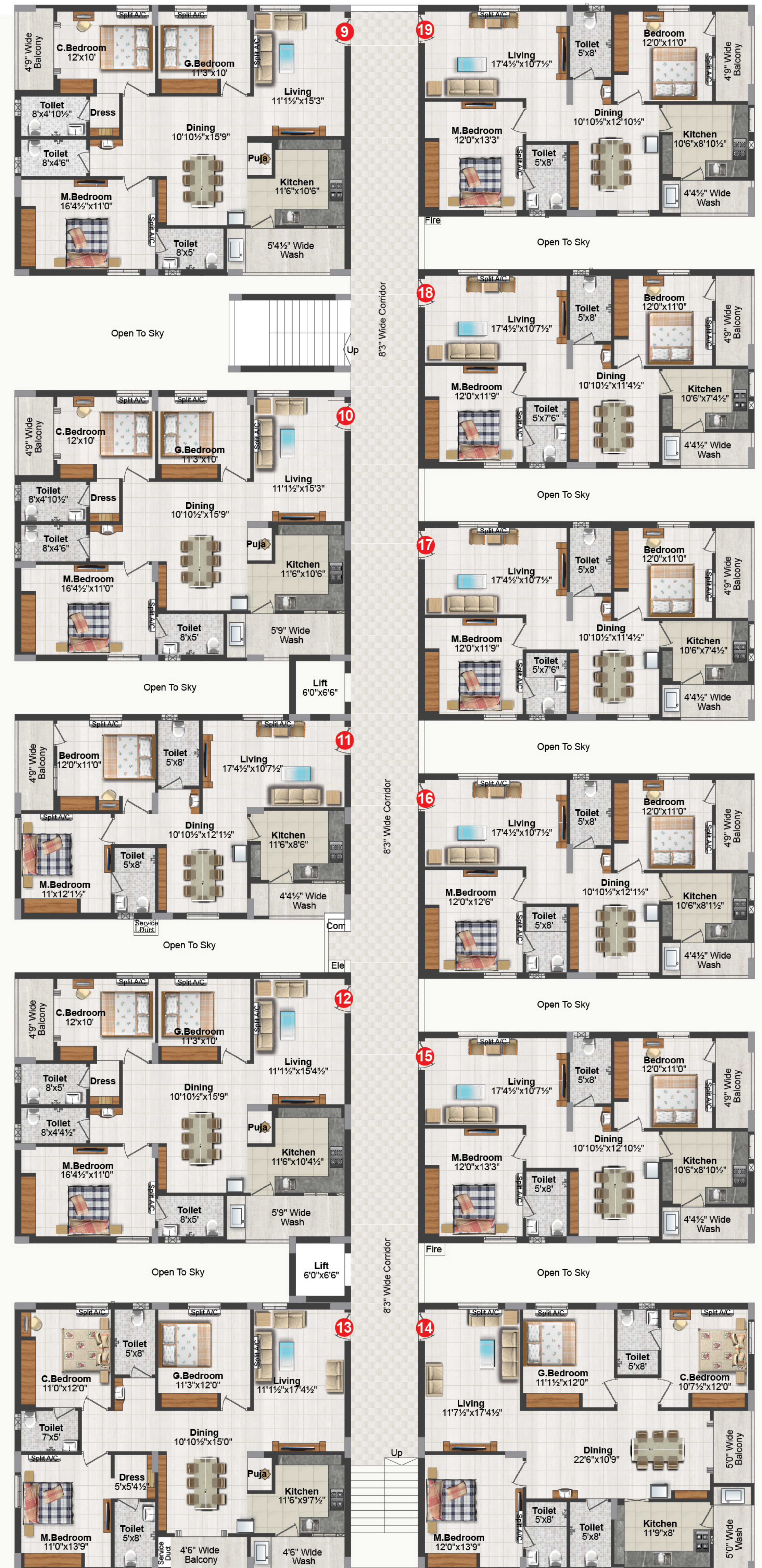


## Block B Typical Floor Plan

AREA STATEMENT

Flat No.	9	10	11	12	13	14	15	16	17	18	19
Unit	3 BHK	3 BHK	2 BHK	3 BHK	3 BHK	3 BHK	2 BHK	2 BHK	2 BHK	2 BHK	2 BHK
Area in Sft.	1705	1705	1291	1705	1705	1705	1330	1291	1253	1253	1330

## 2 BHK 3D VIEW FLAT No. 17





Homes built  
on the trust  
of quality.

Your affection towards your home doubles when you learn that it is built by the best of hands, using the best of material, with exciting spaces that will journey with you all along in life. And when you move into The Sankalp, we look forward to presenting you with the most memorable of experiences, which only a home with a solid foundation can bring forth.





Joy has an  
address you'll  
celebrate at.

Good times, better times and the best of times – live them all up here at The Sankalp. The community sports features that'll make life full of fun times. The place has enough so you don't have to step out of the precincts of your home. Something we'd believe you have always been looking for. Arrive majestically in this community and make your lifetime brim with experiences, emotions and elation – all packed at one place.

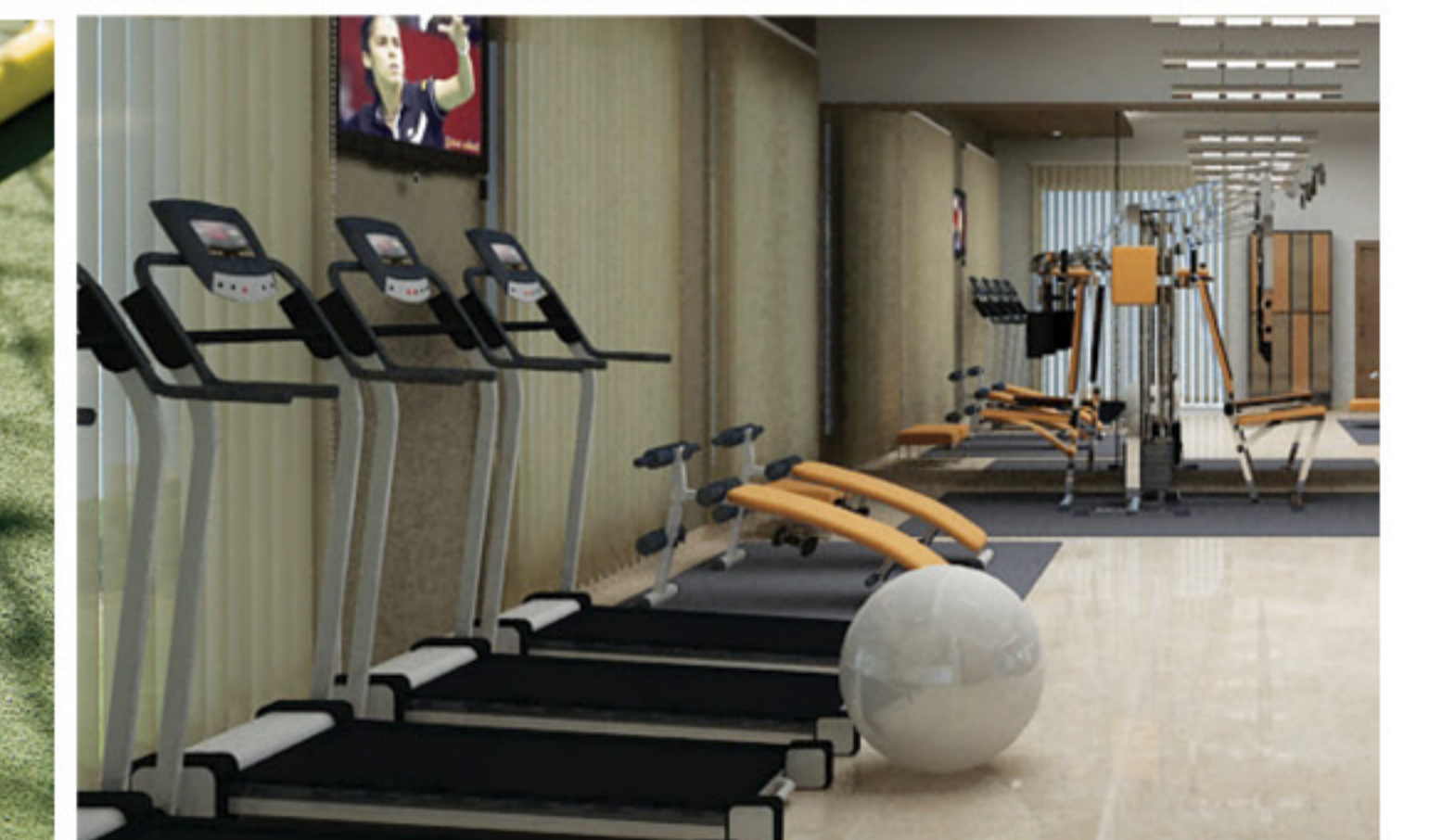


## Amenities & Features

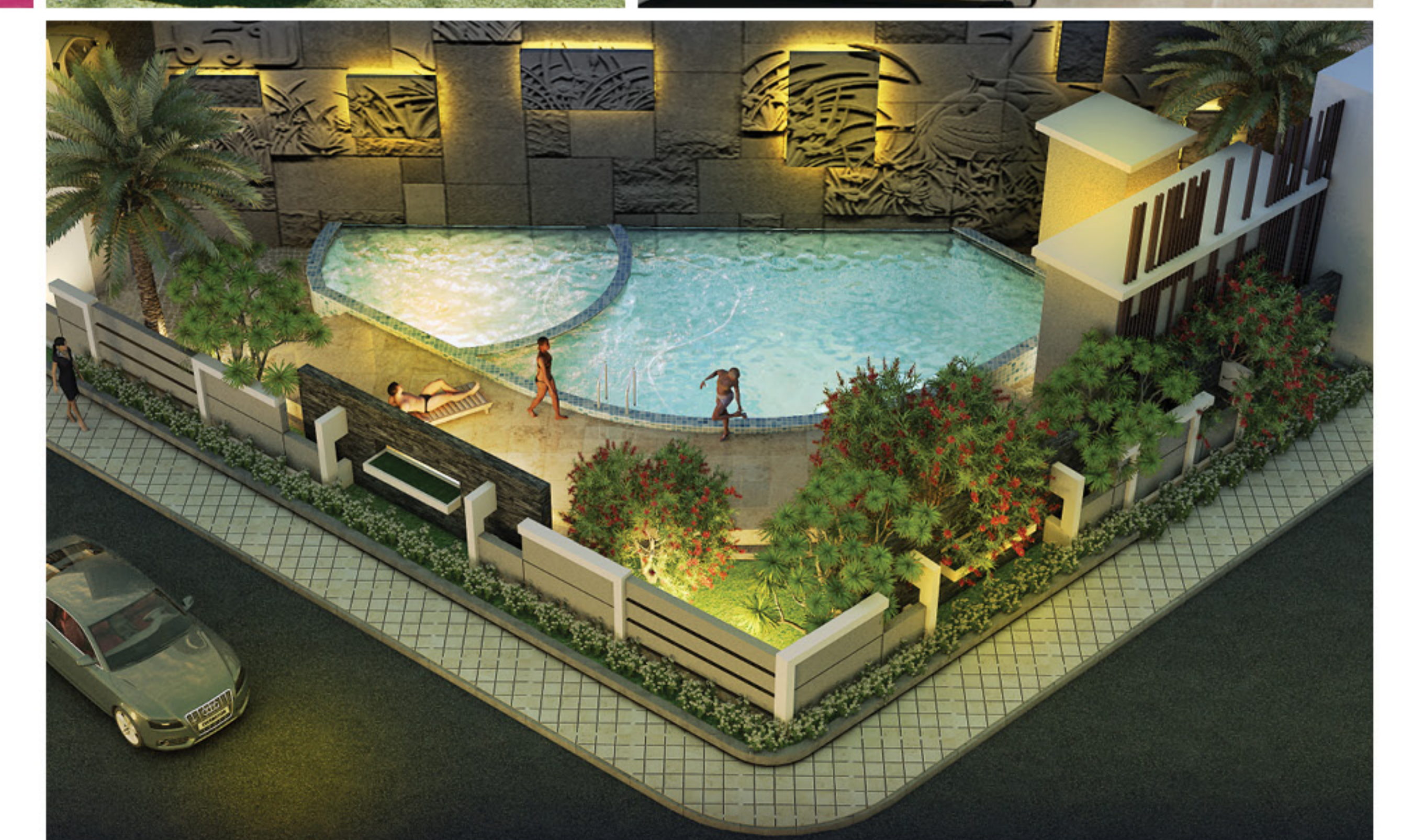
### ■ CLUBHOUSE

- A/C Gym
- A/C Mini Banquet Hall
- Indoor Games
- Guest Rooms
- Convenience Store
- Terrace Party Space

- Swimming Pool
- Children's Play Area
- Intercom Facility
- Sewer Treatment Plant



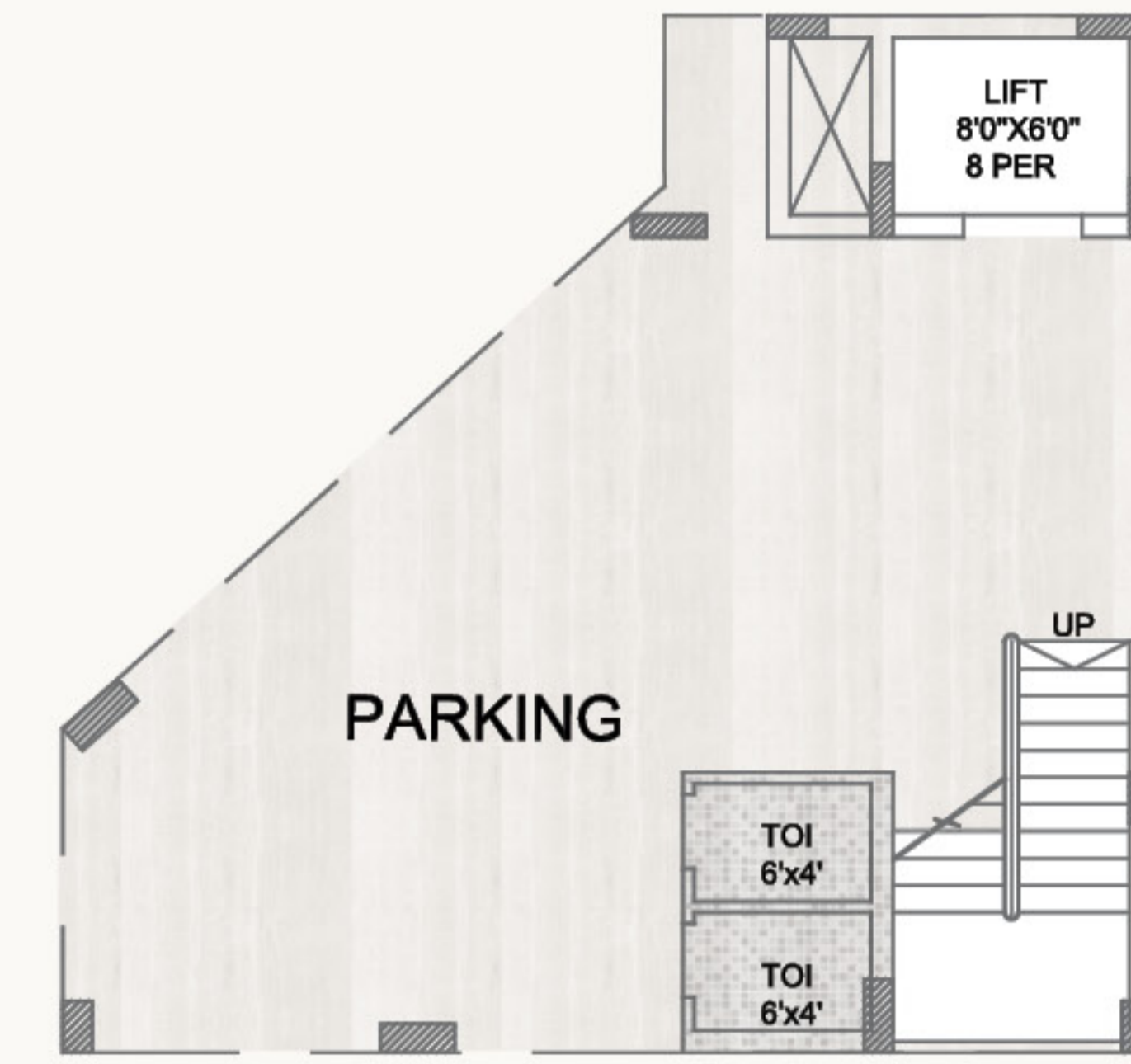
- Piped Gas Connection
- Water Softener Plant
- Back-up Generator
- Solar lighting for outdoor areas
- 24-hr Security Post with Grand entry
- CCTV Coverage in Common Areas
- Beautiful Landscaping
- Internet Provision
- Elegant Entrance Lobby in Each Block



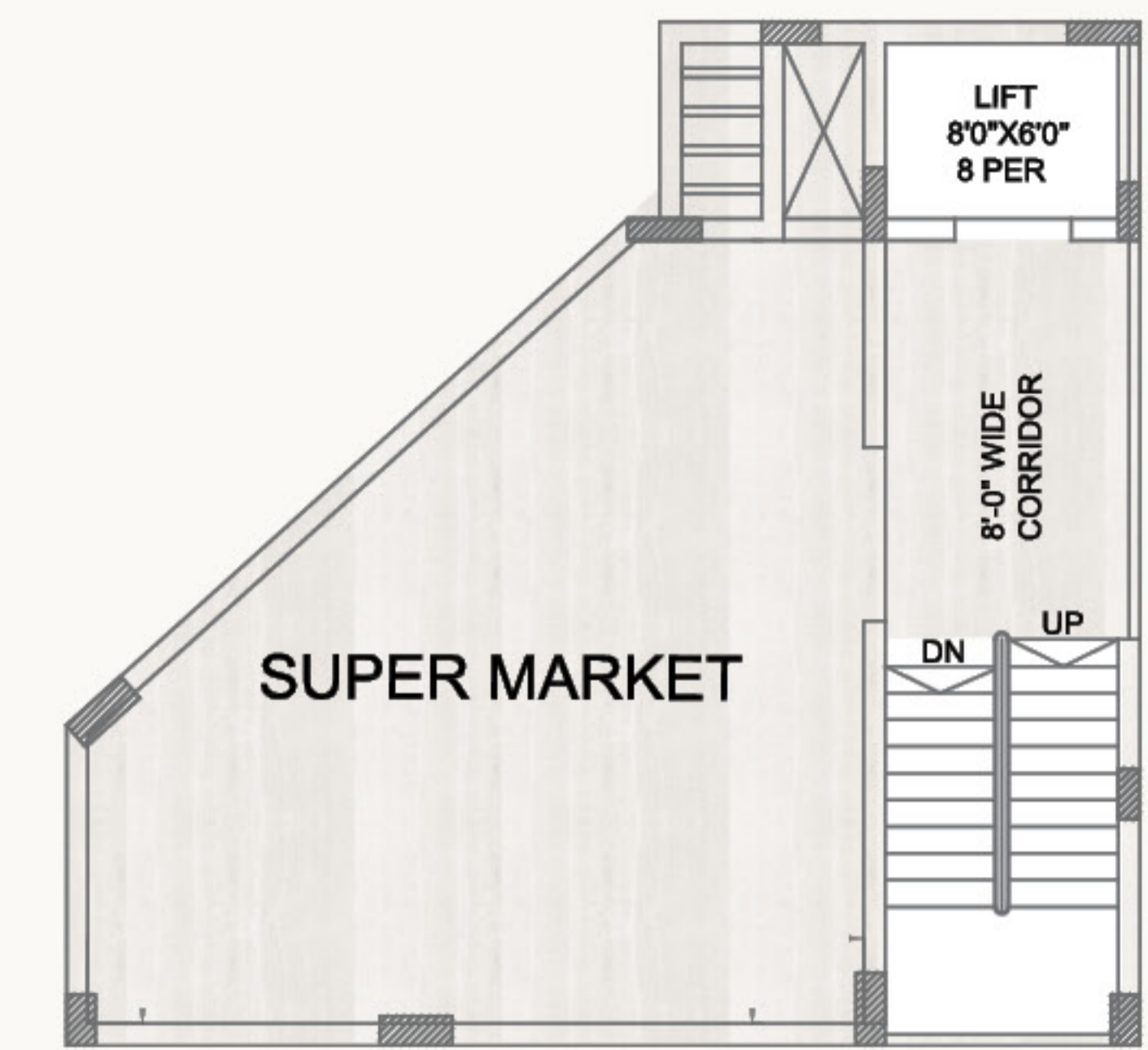




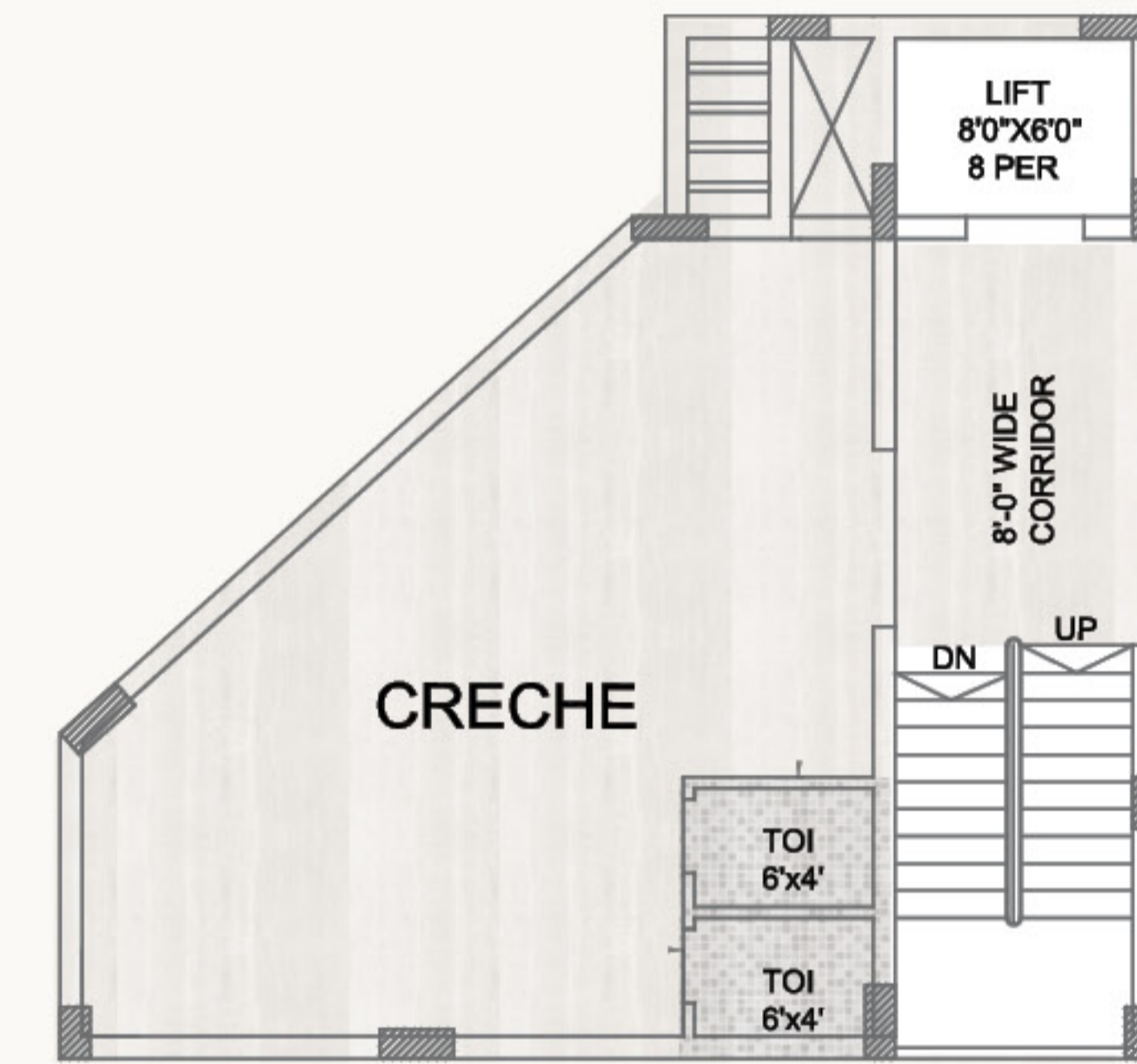
CLUBHOUSE



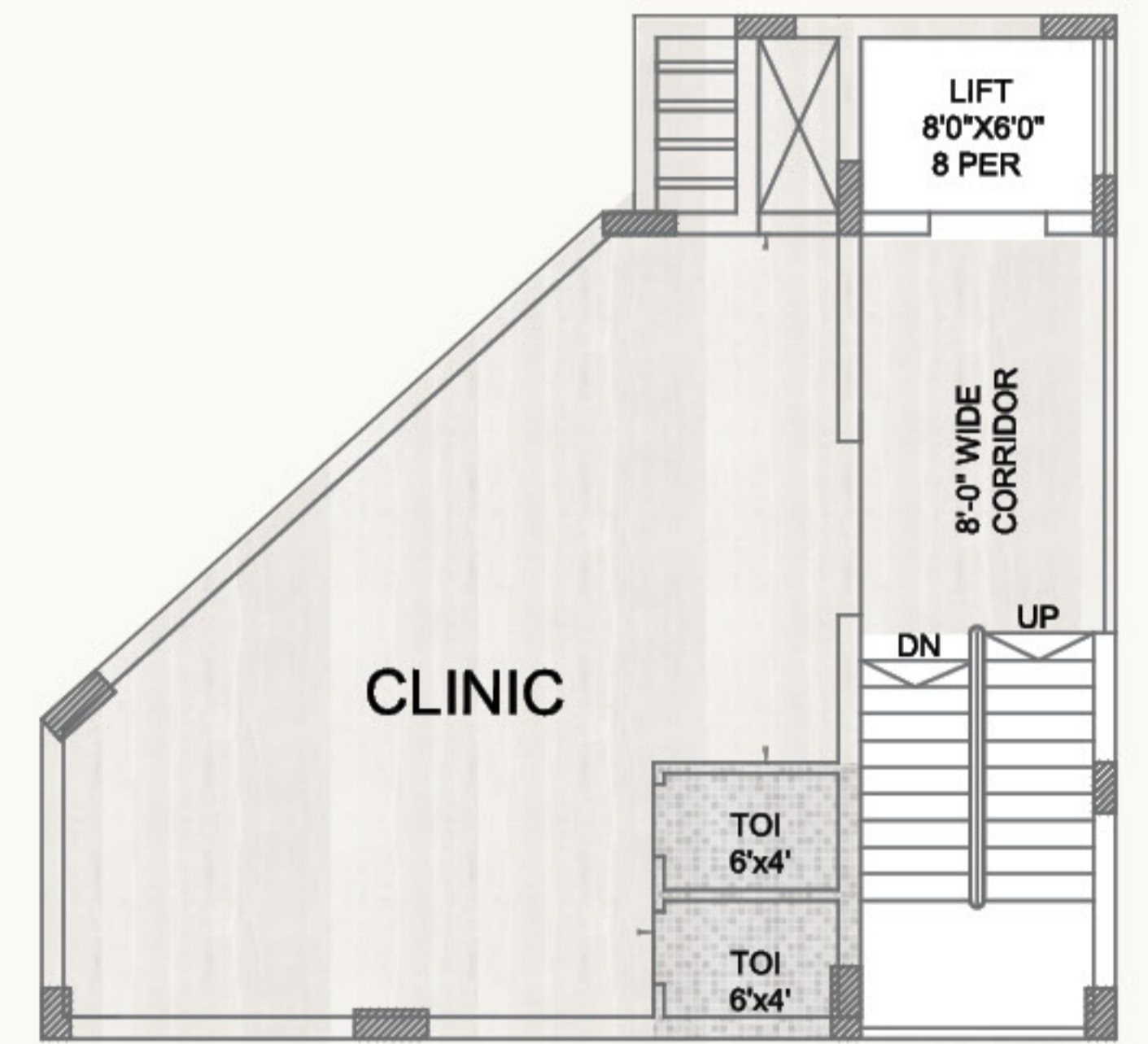
CLUBHOUSE STILT FLOOR PLAN



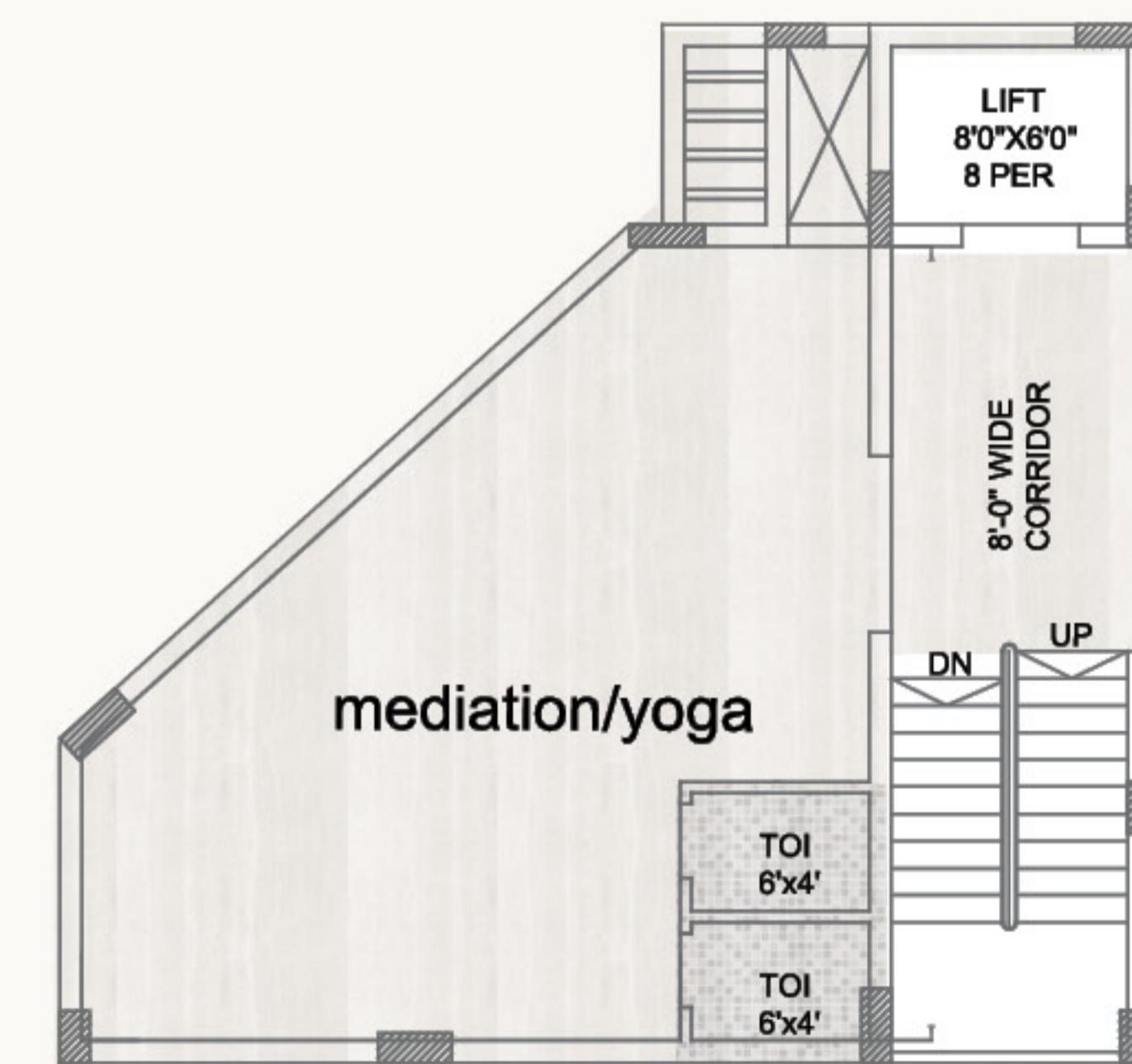
CLUBHOUSE FIRST FLOOR PLAN



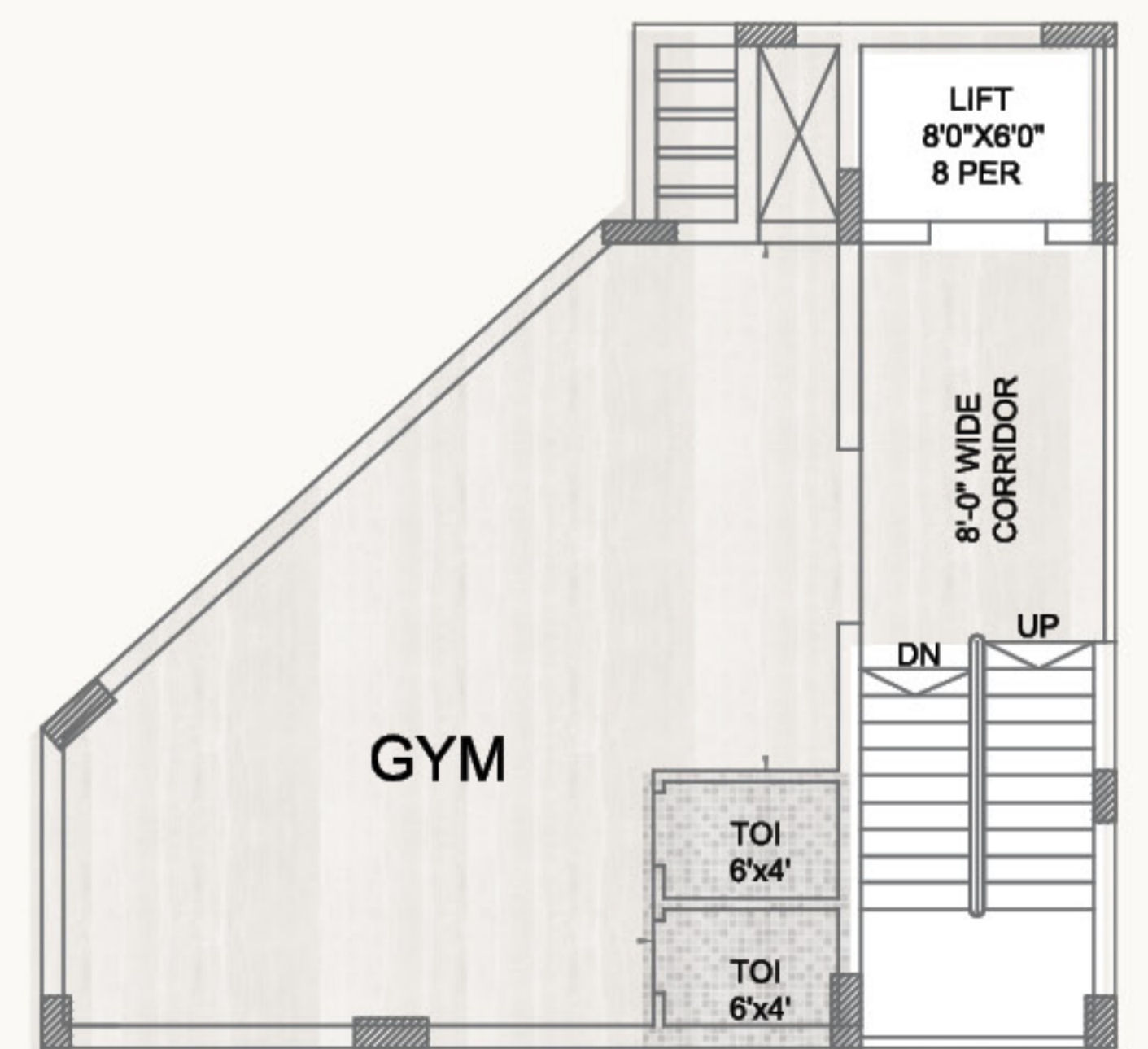
CLUBHOUSE SECOND FLOOR PLAN



CLUBHOUSE THIRD FLOOR PLAN

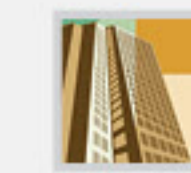


CLUBHOUSE FOURTH FLOOR PLAN



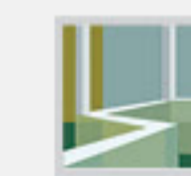
CLUBHOUSE FIFTH FLOOR PLAN





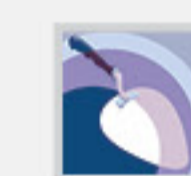
#### STRUCTURE

Seismic Zone II compliant RCC frame structure



#### SUPER STRUCTURE

9" thick AAC block work for external walls and 4" thick brick / block work for internal walls



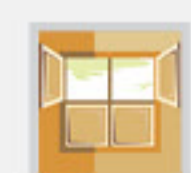
#### PLASTERING

Internal walls with smooth luppam finish, external walls with sponge finish



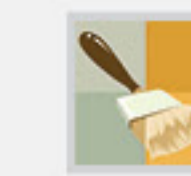
#### DOORS

a) Main Door: Well-seasoned Teak wood frame with Teak wood shutter and Melamine finish. Premium quality fixtures and fittings  
b) Internal Doors: Well-seasoned Teak wood frames with flush shutters and matching fixtures and fittings



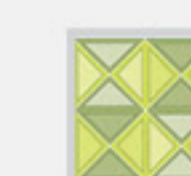
#### WINDOWS

UPVC sliding windows with mosquito mesh.



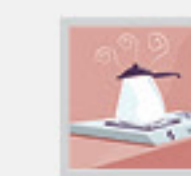
#### PAINTING

a) Smooth finished Internal walls with Acrylic emulsion / plastic emulsion paint  
b) External walls with combination of texture paint and smooth finish as per elevation requirements



#### FLOORING

a) Premium quality vitrified tiles (80cmx80cm) for foyer, living and dining  
b) Bedrooms and kitchen with premium vitrified tiles (60cmx60cm)  
c) Premium quality anti-skid ceramic tile for toilets and utility  
d) Car parking area with VDF and parking tiles



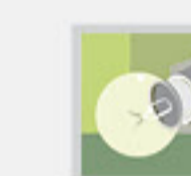
#### KITCHEN & UTILITY

a) Polished black granite slab counter for kitchen with stainless steel sink  
b) Provision for fixing of water purifier and electric chimney in kitchen  
d) Provision for washing machine in utility



#### PLUMBING & SANITARY WARE

a) Premium quality CP fittings.  
b) Premium quality sanitary fixtures (wall mount), provision for geysers in all toilets



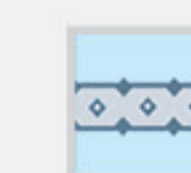
#### ELECTRICAL

a) Fire-resistant low smoke cabling with modular switches of make Anchor ROMA or equivalent  
b) TV and telephone points in living, dining and master bedroom



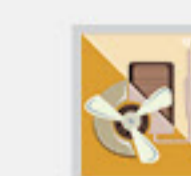
#### LIFTS

2 Nos. of 8 persons capacity lifts per block



#### DADOING

a) Toilets: Premium quality glazed tiles up to door height  
b) Kitchen: Premium quality glazed tiles up to 2' height above the platform  
c) Utility: Premium quality glazed tiles up to 3' height



#### DG

DG back-up for lifts, pumps, common lighting  
3 light and 3 fan points in every flat

Good things  
come in  
generous sizes.





Live on, in the heart  
of a happening  
location.

Most sought-after location - closer to Hitech City.

5-minute drive from Cyber Towers - all along a 100 ft road upto The Sankalp.

Closer to IT companies, top education hubs, malls etc.

Well Ventilated Project - 3 sides roads - 100 ft, 50 ft, 100 ft.

## Proximity

### IT OFFICES

Cyber Towers (Hitech City)	3.3 KM
Oracle	3.3 KM
Raheja Mind Space	5.3 KM
Infosys & Microsoft	10.0 KM

### HOTELS

Novotel	3.1 KM
Minerva Grand	4.4 KM
N Convention	3.0 KM
Westin	5.3 KM

### MALLS

Forum Sujana Mall	2.6 KM
Manjeera Mall	3.6 KM
Inorbit Mall	5.9 KM

### CONNECTIVITY

Hitech City MMTS Station	0.75 km
Hafeezpet MMTS Station	1.5 Km
ORR	6.0 Km

### HOSPITALS

Rainbow Hospital	6.4 KM
Image Hospital	5.2 KM
Apollo Hospital	10.0 KM

### SCHOOLS

Meridian	2.9 KM
Daffodils Public School	3.0 KM
DPS	8.5 KM
Oakridge	9.3 KM

### COLLEGES/INSTITUTIONS

National Academy of Construction	1.6 KM
JNTU	2.3 KM
NIFT	3.0 KM
IIIT	9.7 KM

## Location Map

Google Coordinate : 17.476737, 78.376816

